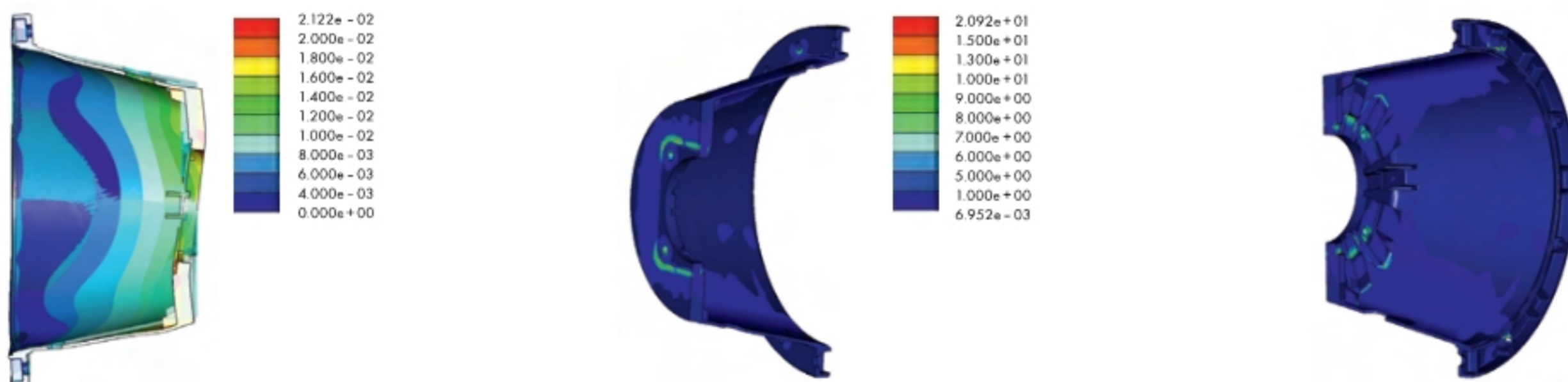


用于 IMB5-IMB 35-IM V1 结构的电机

FOR ELECTRIC MOTORS FRAME IMB5-IMB 35-IM V1

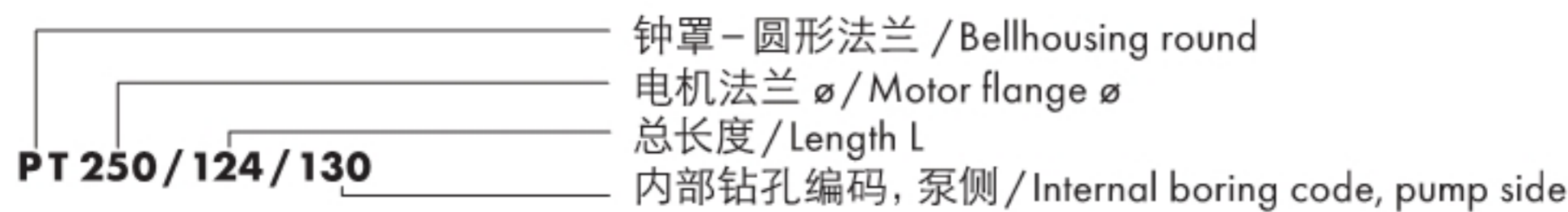
| IEC 电机型号 SIZE 电机轴 SHAFT (d x L) | 电机功率 KW at n = 1500 min ⁻¹ | 钟罩 BELLHOUSING | 弹性联轴器 ELASTIC COUPLING | 钟罩 支架 FOOT BRACKET | 尺寸标注 / DIMENSIONS mm | | | | | | | | | |
|---|---|-------------------|------------------------------|-----------------------------|-------------------------|-----------|-----------|-----|------------------|------------------|------------------|-----|----------------|-----|
| | | | | | 电机侧 / MOTOR SIDE | | | | | | | | 泵侧 / PUMP SIDE | |
| | | | | | 型号 / SIZE | 型号 / SIZE | 型号 / SIZE | ∅ D | ∅ D ₁ | ∅ D ₂ | ∅ D ₃ | L | L ₁ | G |
| 225 S+M (60 x 140) | 37-45 | PT 450/234/... | RE 48 | PTFS 450 | 450 | 400 | 350 | 350 | 234 | 26 | 18 | M16 | 318 | 75 |
| | | PT 450/262/... | | | | | | | 262 | | | | 314 | 75 |
| | | PT 450/285/... | | | | | | | 285 | | | | 310 | 75 |
| 250 M (65 x 140) | 55 | PT 550/248/... | RE 55 (55 KW) | PTFS 550 | 550 | 500 | 450 | 450 | 248 | 26 | 18 | M16 | 370 | 80 |
| | | PT 550/265/... | | | | | | | 265 | | | | 365 | 80 |
| 280 S+M (75 x 140) | 75-90 | PT 550/295/... | RE 65 (75-90 KW) | PTFS 550 | 550 | 500 | 450 | 450 | 295 | 26 | 18 | M16 | 352 | 80 |
| | | PT 550/325/...* | | | | | | | 325 | | | | 345 | 120 |
| 315 S+M 315 L (80 x 170) | 110-200 | PT 660/310/... | RE 75 (110-132 KW) | PTFS 660 | 660 | 600 | 550 | 550 | 310 | 32 | 22 | M20 | 410 | 120 |
| | | PT 660/330/... | | | | | | | 330 | | | | 405 | 120 |
| | | PT 660/345/...* | | | | | | | 345 | | | | 400 | 120 |
| 355 L / 400 L (100 x 210) | 250-400 | PT 800/335/... | RE 90 (250 KW) | - | 800 | 740 | 680 | 660 | 335 | 50 | 22 | M20 | 490 | 125 |
| | | PT 800/365/... | | | | | | | 365 | | | | 425 | 125 |
| | | PT 800/395/... | | | | | | | 395 | | | | 416 | 125 |

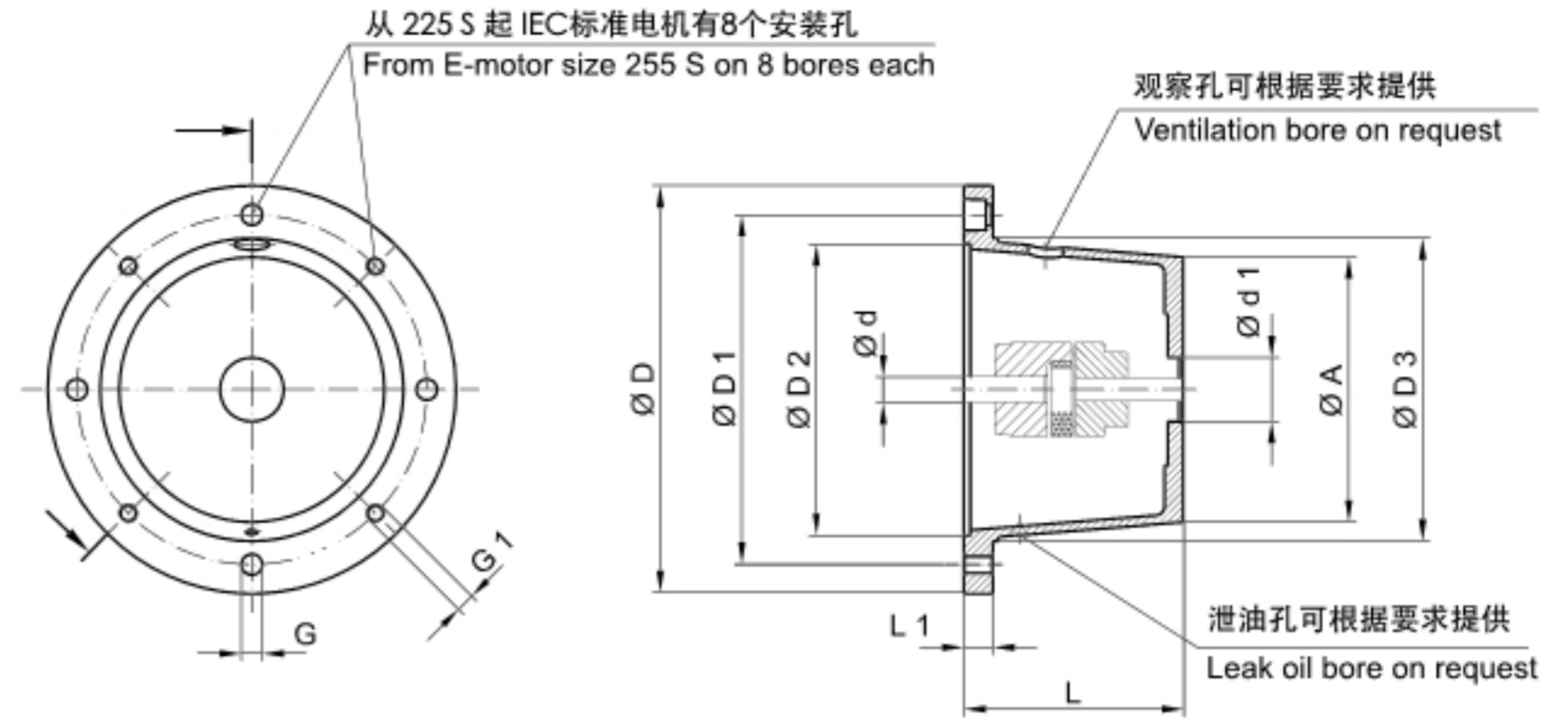
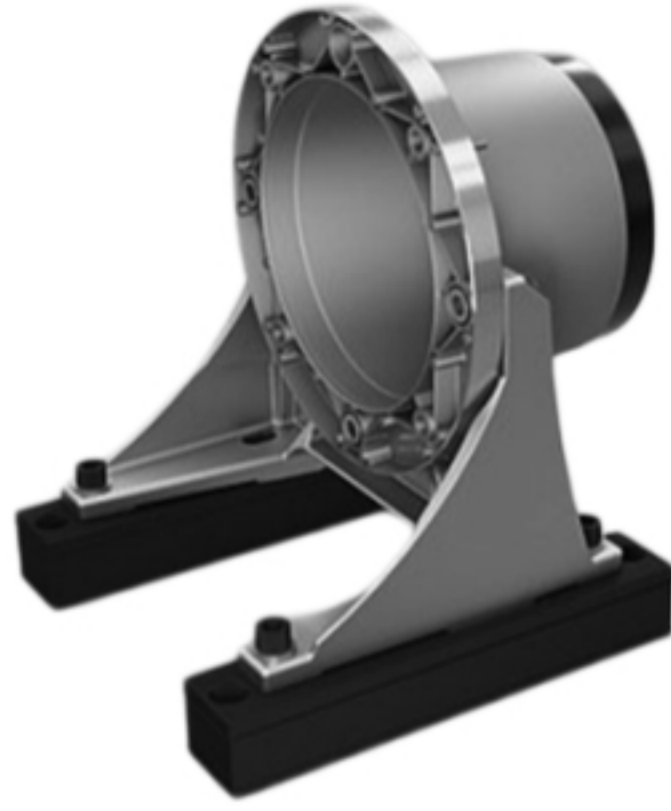
钟罩的强度计算
Strength calculation of a bellhousing



订货描述示例: 钟罩

ORDERING CODE: BELLHOUSINGS





产品描述

- IEC 电机和液压泵之间的连接元件
- 库存有各种规格的钟罩, 适用于各种液压泵
- 两端安装法兰均经机加工
- 自动对中电机轴和泵轴
- 标准钟罩材质为铝

PRODUCT DESCRIPTION

- Connection elements between IEC motor and hydraulic pump
- Available for nearly all hydraulic pumps ex stock at short notice
- Both mounting sides are finished
- Centred motor shaft and pump shaft
- Standard bellhousings made of aluminium

用于 IMB5-IMB 35-IM V1 结构的电机

FOR ELECTRIC MOTORS FRAME IMB5-IMB 35-IM V1

| IEC电机型号 SIZE 电机轴 SHAFT (d x L) | 电机功率 KW at n= 1500 min ⁻¹ | 钟罩 BELLHOUSING | 弹性联轴器 ELASTIC COUPLING | 钟罩支架 FOOT BRACKET | 尺寸标注 / DIMENSIONS mm | | | | | | | | | | | |
|--|--|-------------------|------------------------------|-------------------------|-------------------------|-----------|-----------|-----|------------------|------------------|------------------|-----|----------------|----|-----|-----|
| | | | | | 电机侧 / MOTOR SIDE | | | | | | | | 泵侧 / PUMP SIDE | | | |
| | | | | | 型号 / SIZE | 型号 / SIZE | 型号 / SIZE | Ø D | Ø D ₁ | Ø D ₂ | Ø D ₃ | L | L ₁ | G | G1 | Ø A |
| 71 (14 x 30) | 0,25-0,37 | PT 160/70/... | RE 19 | PTFL 160 | 160 | 130 | 110 | 110 | 70 | 13 | 9 | M8 | 103 | 22 | | |
| | | PT 160/80/... | | | | | | | 80 | 13 | | | | | 103 | 35 |
| | | PT 160/90/... | | | | | | | 90 | 13 | | | | | 102 | 48 |
| | | PT 160/100/...* | | | | | | | 100 | 13 | | | | | 104 | 50 |
| 80 (19 x 40) 90 S + L (24 x 50) | 0,55-0,75 1,1-1,5 | PT 200/90/... | RE 19 | PTFL 200 | 200 | 165 | 130 | 145 | 90 | 16 | 11 | M10 | 127 | 25 | | |
| | | PT 200/100/... | | | | | | | 100 | | | | 127 | 25 | | |
| | | PT 200/110/... | | | | | | | 110 | | | | 126 | 45 | | |
| | | PT 200/124/... | | | | | | | 124 | | | | 125 | 50 | | |
| 100 L 112 M (28 x 60) | 2,2-4 | PT 250/124/... | RE 24 | PTFS 250 | 250 | 215 | 180 | 190 | 124 | 18 | 14 | M12 | 175 | 25 | | |
| | | PT 250/135/... | | | | | | | 135 | | | | 174 | 50 | | |
| | | PT 250/160/... | | | | | | | 160 | | | | 176 | 50 | | |
| | | PT 250/174/... | | | | | | | 174 | | | | 175 | 58 | | |
| 132 S+M (38 x 80) | 5,5-7,5 | PT 300/144/... | RE 28 | PTFS 300 | 300 | 265 | 230 | 234 | 144 | 20 | 14 | M12 | 221 | 35 | | |
| | | PT 300/155/... | | | | | | | 155 | | | | 220 | 55 | | |
| | | PT 300/168/... | | | | | | | 168 | | | | 218 | 65 | | |
| | | PT 300/186/... | | | | | | | 186 | | | | 217 | 65 | | |
| 160 M+L (42 x 110) 180 M+L (48 x 110) | 11-15 | PT 350/188/... | RE 38 (11-15 KW) | PTFS 350 | 350 | 300 | 250 | 260 | 188 | 26 | 18 | M16 | 238 | 20 | | |
| | PT 350/204/... | 204 | | | | | | | 237 | | | | 48 | | | |
| | 18,5-22 | PT 350/228/... | RE 42 (18,5-22 KW) | | | | | | 228 | | | | 235 | 50 | | |
| | PT 350/256/... | 256 | | | | | | | 232 | | | | 50 | | | |
| 200 L (55 x 110) | 30 | PT 400/204/... | RE 42 | PTFS 400 | 400 | 350 | 300 | 300 | 204 | 26 | 18 | M16 | 267 | 75 | | |
| | | PT 400/228/... | | | | | | | 228 | | | | 263 | 75 | | |
| | | PT 400/256/... | | | | | | | 256 | | | | 258 | 75 | | |